

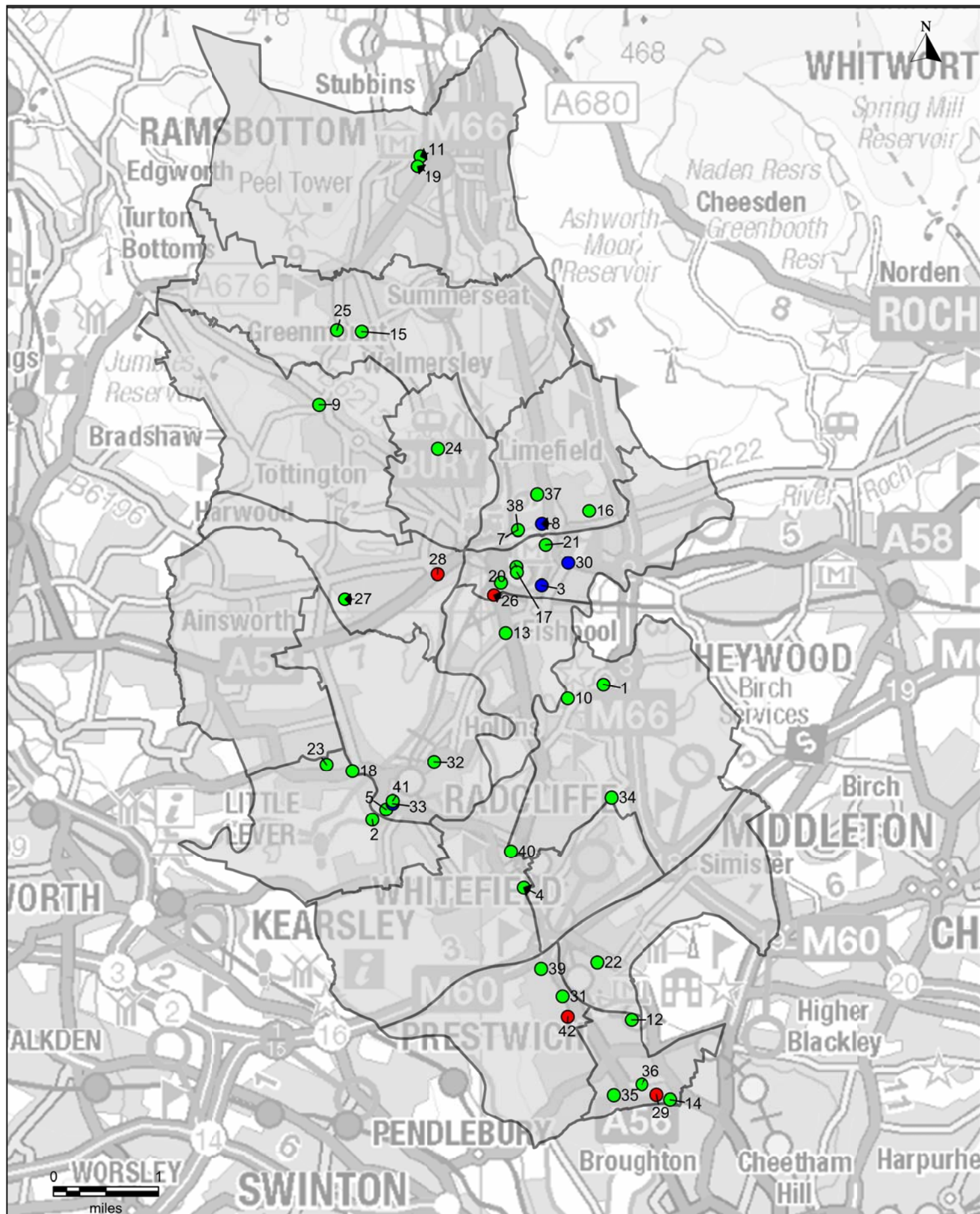
Bury Council Boundary

Contains Ordnance Survey data © Crown copyright and database right 2014
Contains National Statistics data © Crown copyright and database right 2014



North West
Commissioning Support Unit

All maps within this document produced by:
Medicines Optimisation Team (GM), NHS North West Commissioning Support Unit
St James's House, Pendleton Way, Salford M6 5FW
Telephone: 0161 212 5680
Email: gmcsu.medsman@nhs.net



Bury Pharmacy Contractors by Contract Type
(with reference number)

Contains Ordnance Survey data © Crown copyright and database right 2014
Contains National Statistics data © Crown copyright and database right 2014



North West
Commissioning Support Unit

Pharmacies by Contract Type

100 hours
Contract

(5)

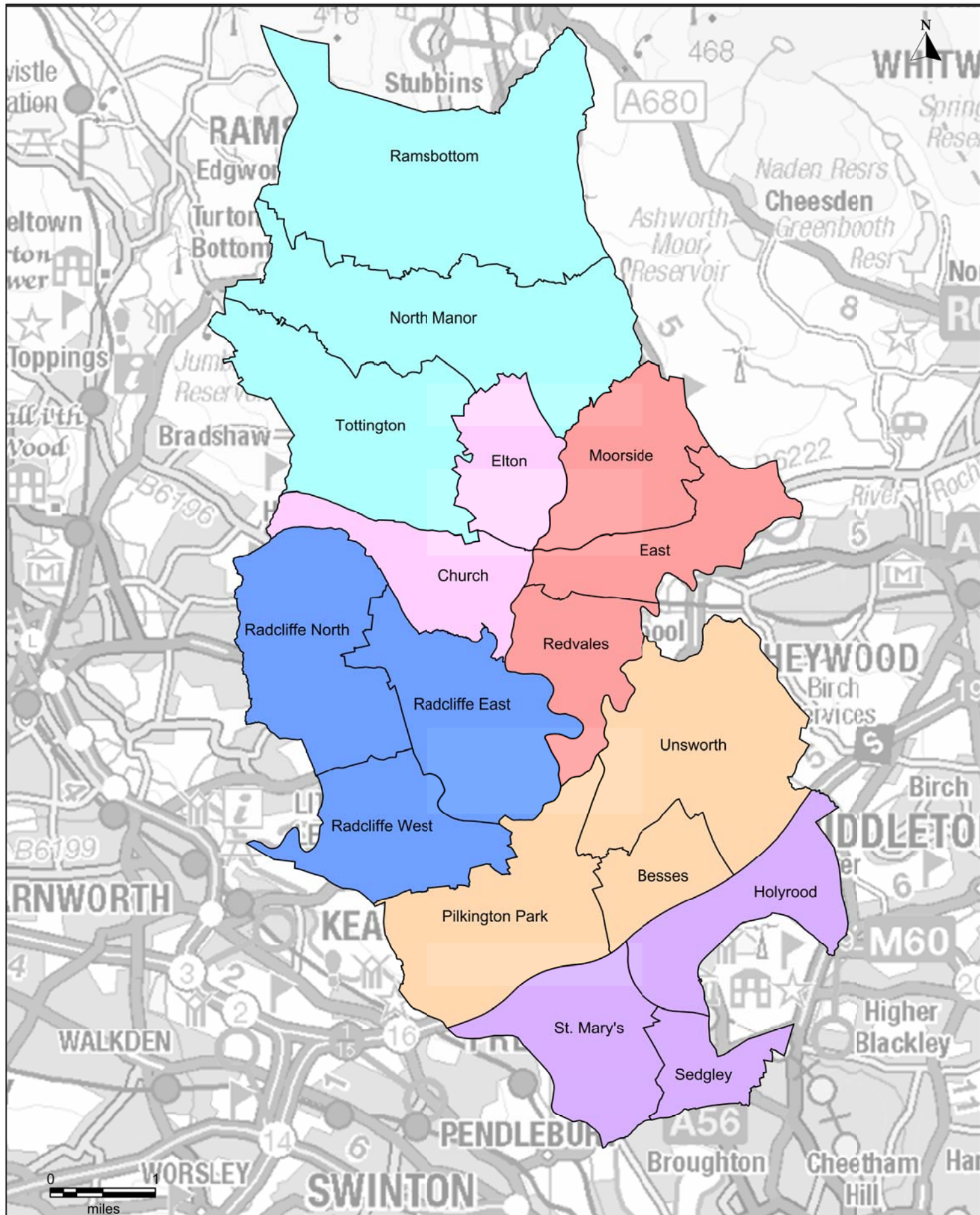
Distance
Selling/
Internet
Contract

(4)

Standard
Contract

(33)

Wards



Electoral Ward and Township boundaries in Bury

Contains Ordnance Survey data © Crown copyright and database right 2014
Contains National Statistics data © Crown copyright and database right 2014



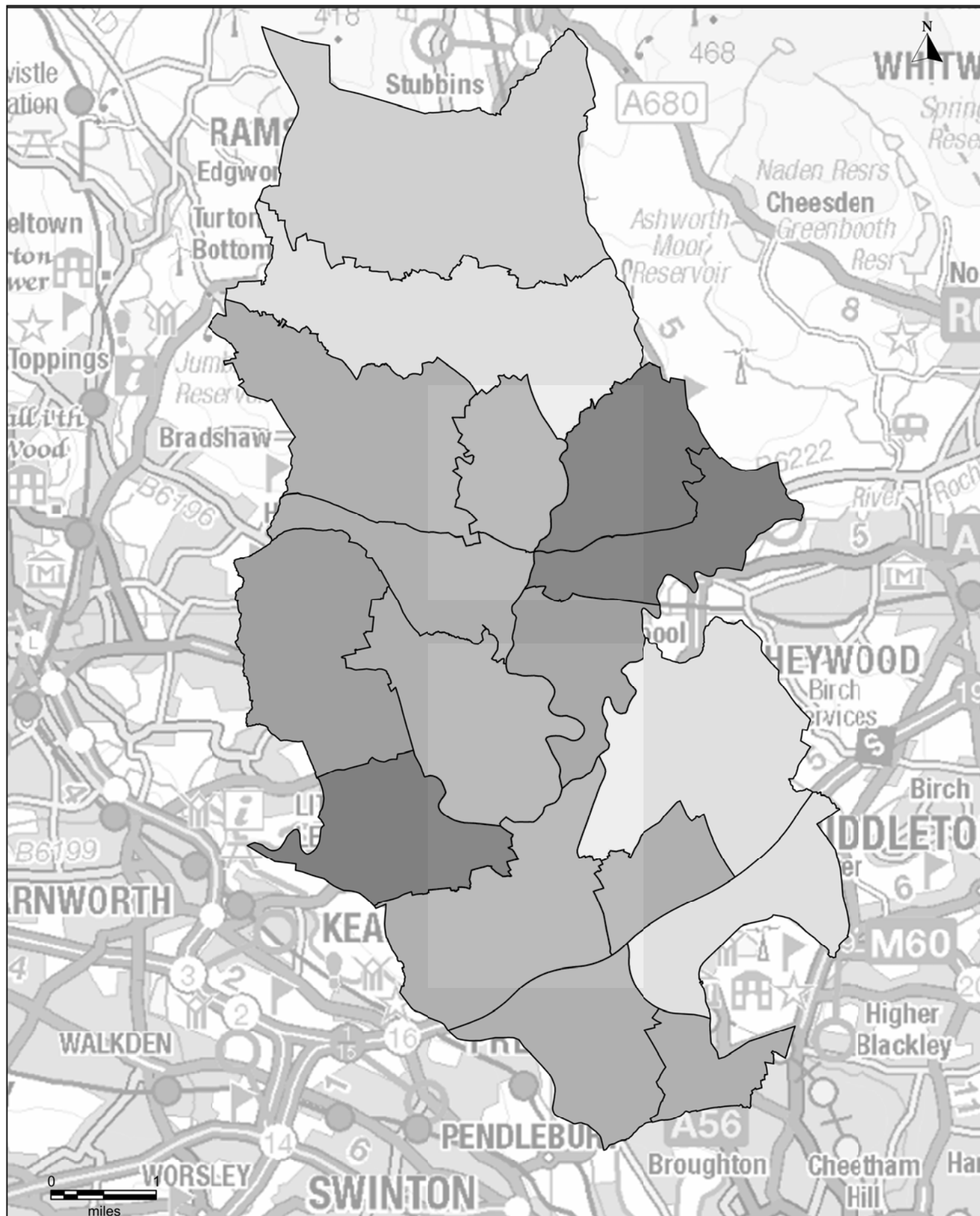
North West
Commissioning Support Unit

Bury Wards and Township Boundaries

- Bury East
- Bury West
- Prestwich

- Radcliffe
- Ramsbottom, Tottington and North Manor

- Whitefield and Unsworth



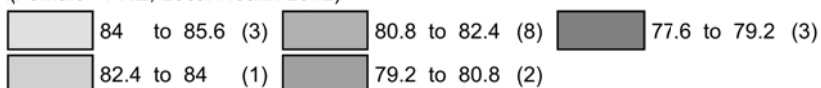
Electoral Ward and Life Expectancy from birth for females

Contains Ordnance Survey data © Crown copyright and database right 2014
Contains National Statistics data © Crown copyright and database right 2014

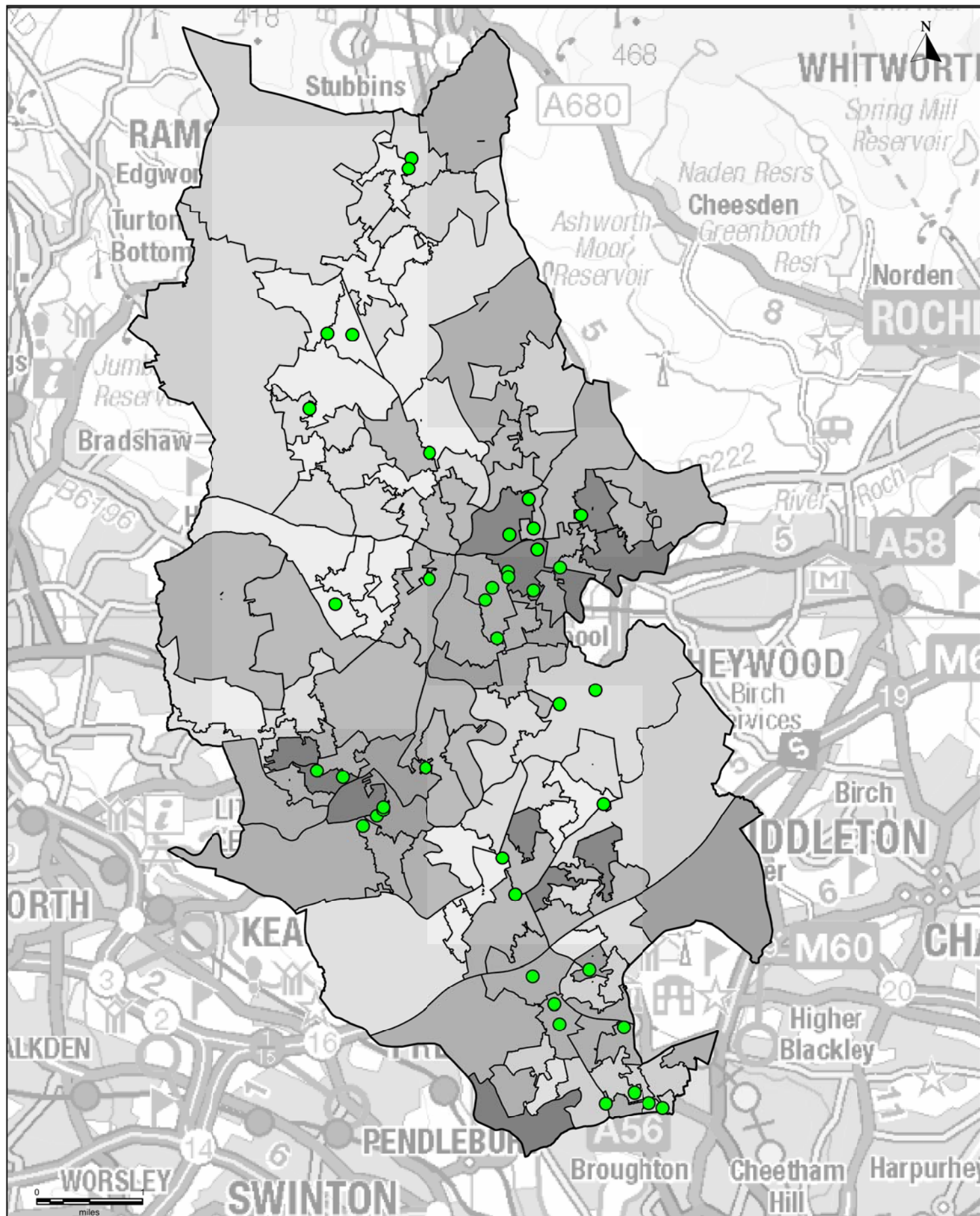


North West
Commissioning Support Unit

Life Expectancy at Birth by Ward
(Female - PHE, Local Health 2012)



Wards



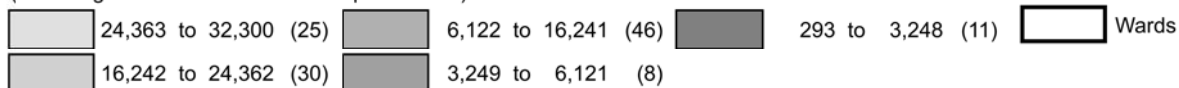
Deprivation in Bury (IMD 2010) ranking for England by LSOA

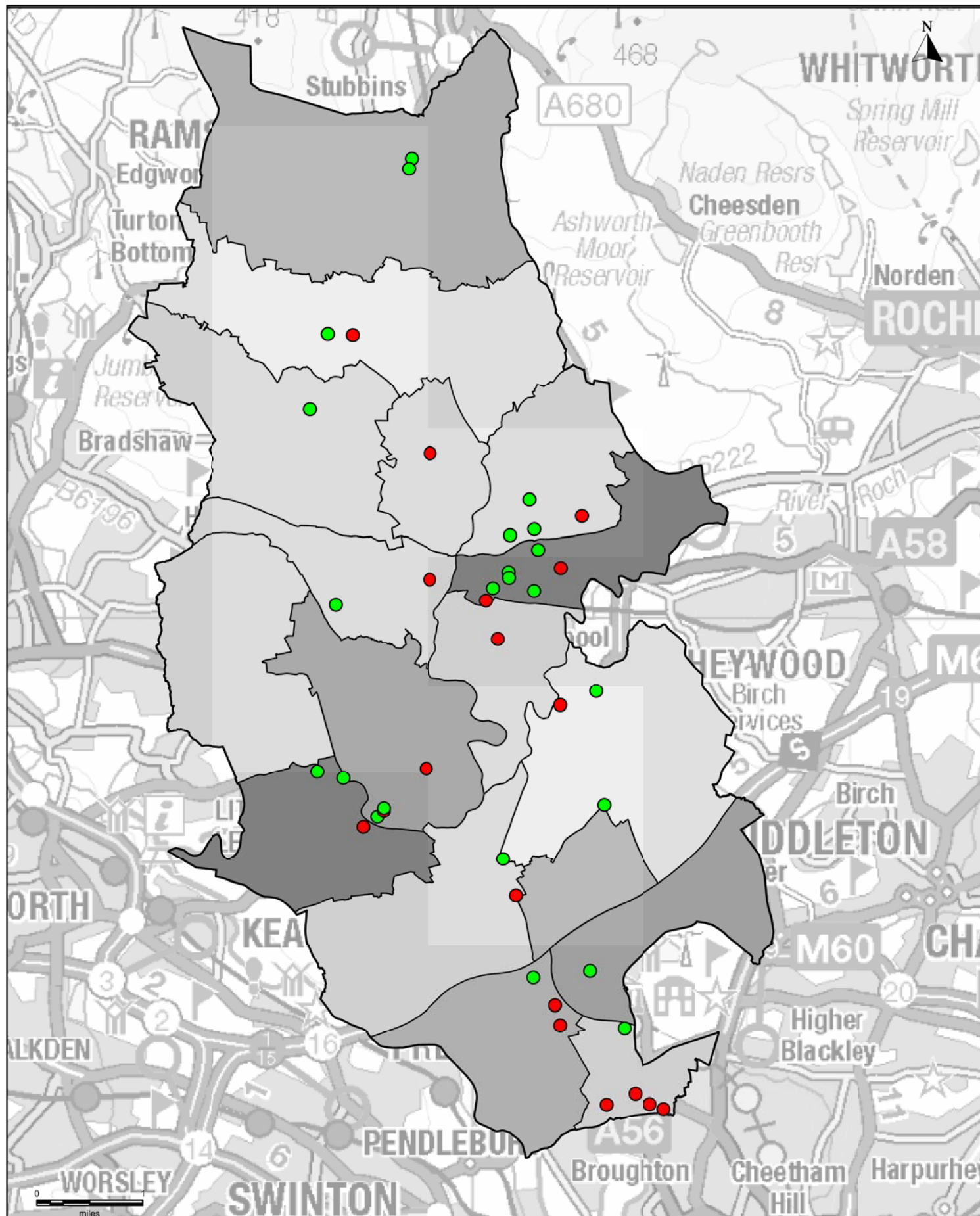
Contains Ordnance Survey data © Crown copyright and database right 2014
Contains National Statistics data © Crown copyright and database right 2014



North West
Commissioning Support Unit

Bury's IMD Ranking for England by LSOA
(A ranking of 1 indicates the most deprived area)





Stop Smoking Support by Pharmacy Contractors in Bury

Contains Ordnance Survey data © Crown copyright and database right 2014
Contains National Statistics data © Crown copyright and database right 2014



North West
Commissioning Support Unit

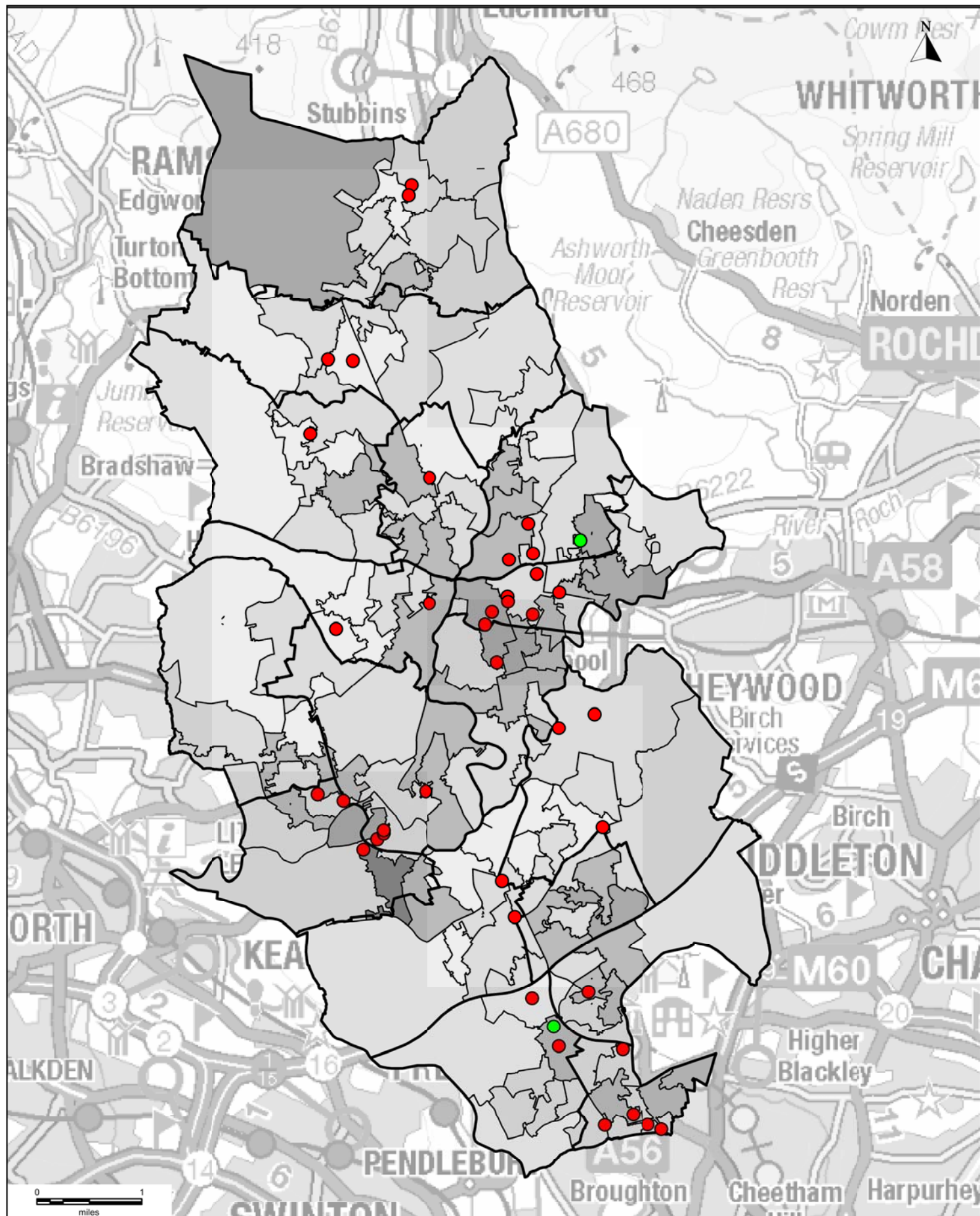
Bury Pharmacy Contractors and
Smoking Cessation services provision

Pharmacy Contractors
commissioned to
provide Stop Smoking
Support (24)

Pharmacy Contractors
not commissioned to
provide Stop Smoking
Support (18)

Bury Percentage of Smokers by Ward
(Bury Health Survey 2010 data)

24 to 27 18 to 21 12 to 15
21 to 24 15 to 18 Wards



Bury Pharmacy Contractors providing Chlamydia Testing and Treatment

Contains Ordnance Survey data © Crown copyright and database right 2014
Contains National Statistics data © Crown copyright and database right 2014



North West
Commissioning Support Unit

Pharmacy Contractors and provision of Chlamydia Testing and Treatment

Pharmacy
Contractor
commissioned to
provide

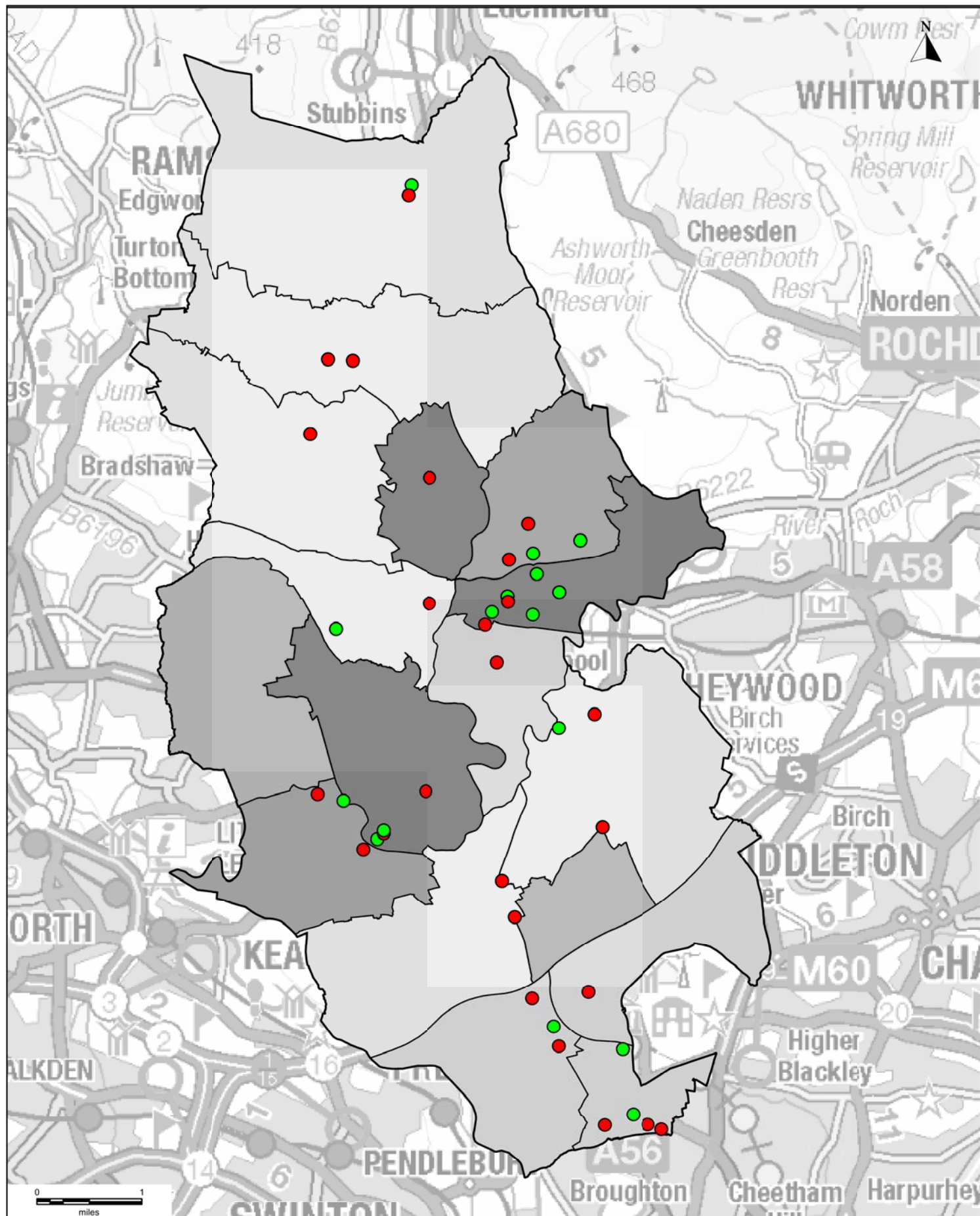
(2)

Pharmacy
Contractor not
commissioned to
provide

(40)

Population by LSOA for 15-24 year olds

302 to 354 (1)	152 to 202 (55)
252 to 302 (7)	102 to 152 (26)
202 to 252 (31)	Wards



Bury Pharmacy Contractors providing Emergency
Hormonal Contraception

Contains Ordnance Survey data © Crown copyright and database right 2014
Contains National Statistics data © Crown copyright and database right 2014



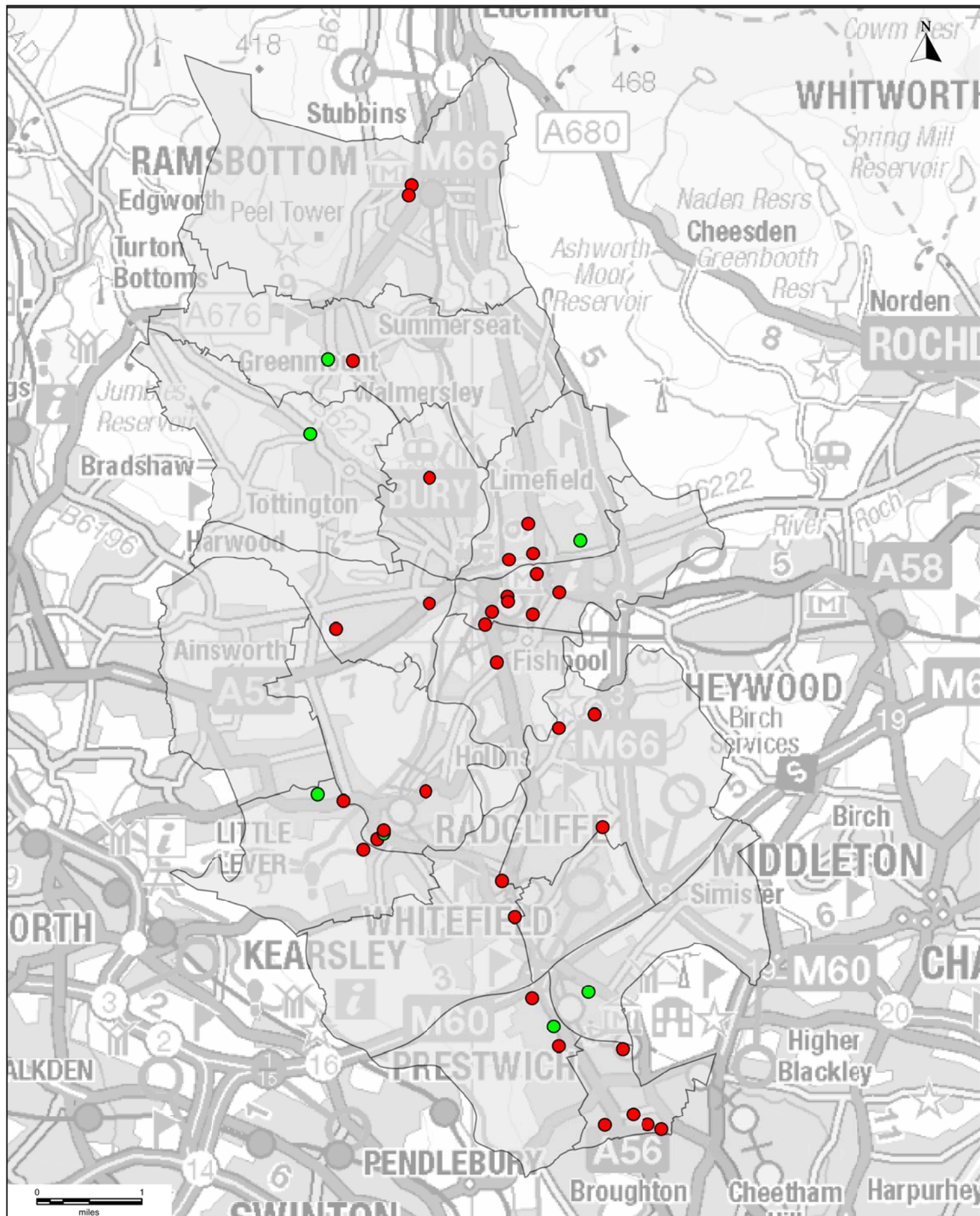
North West
Commissioning Support Unit

Pharmacy Contractors and provision of EHC

- Commissioned to provide (17)
- Not commissioned to (25)

Bury Conception rates per 1000 females age
13 to 17 years by Ward

- 61 to 71
- 49 to 61
- 37 to 49
- 25 to 37
- 13 to 25
- Wards



Bury Pharmacy Contractors and Needle Exchange provision

Contains Ordnance Survey data © Crown copyright and database right 2014
Contains National Statistics data © Crown copyright and database right 2014



North West
Commissioning Support Unit

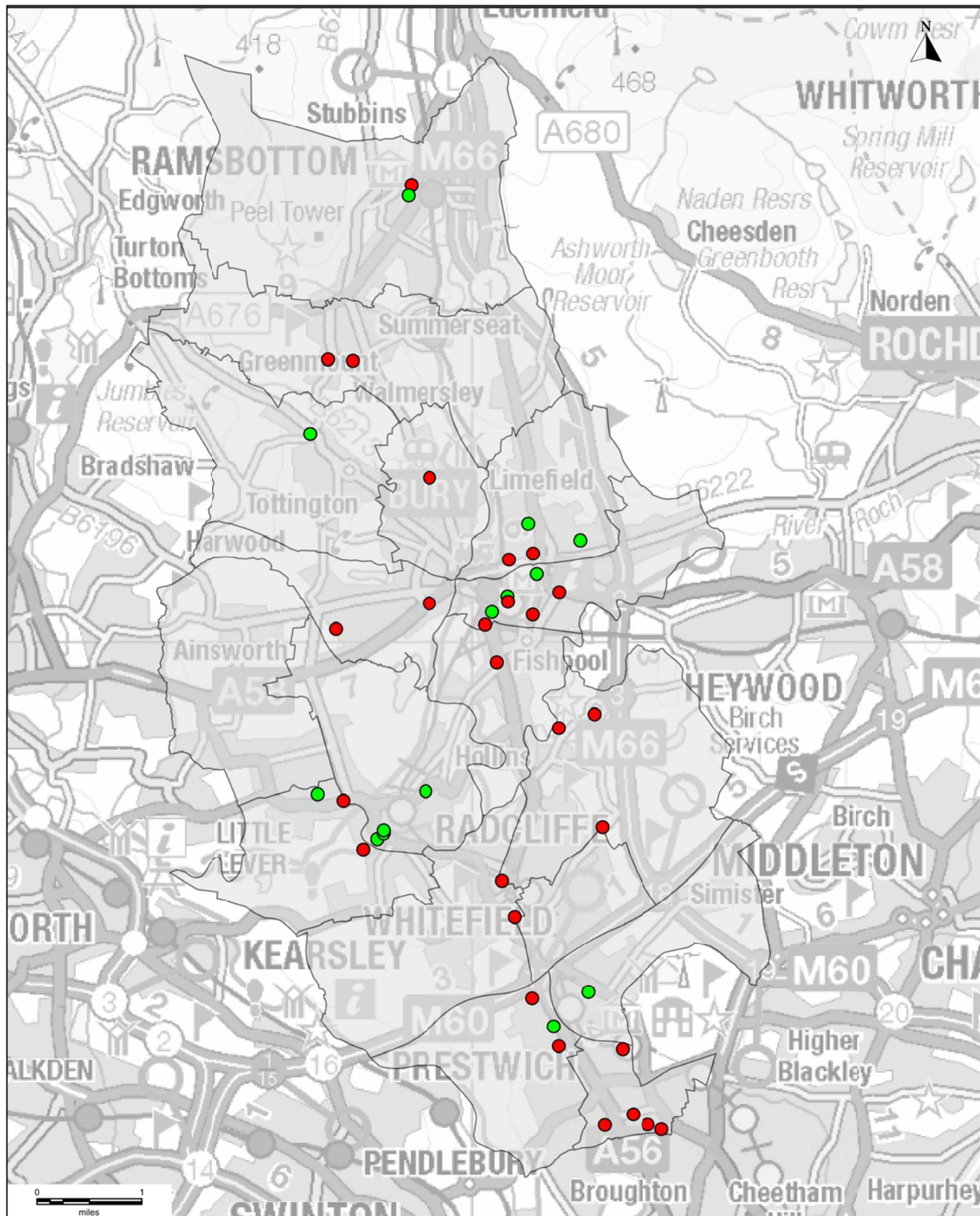
Bury Pharmacy Contractors and Needle Exchange provision

- Pharmacy Contractors commissioned to provide Needle Exchange
- Pharmacy Contractors not commissioned to provide Needle

(7)

(35)

Wards



Bury Pharmacy Contractors and Supervised Consumption provision

Contains Ordnance Survey data © Crown copyright and database right 2014
Contains National Statistics data © Crown copyright and database right 2014

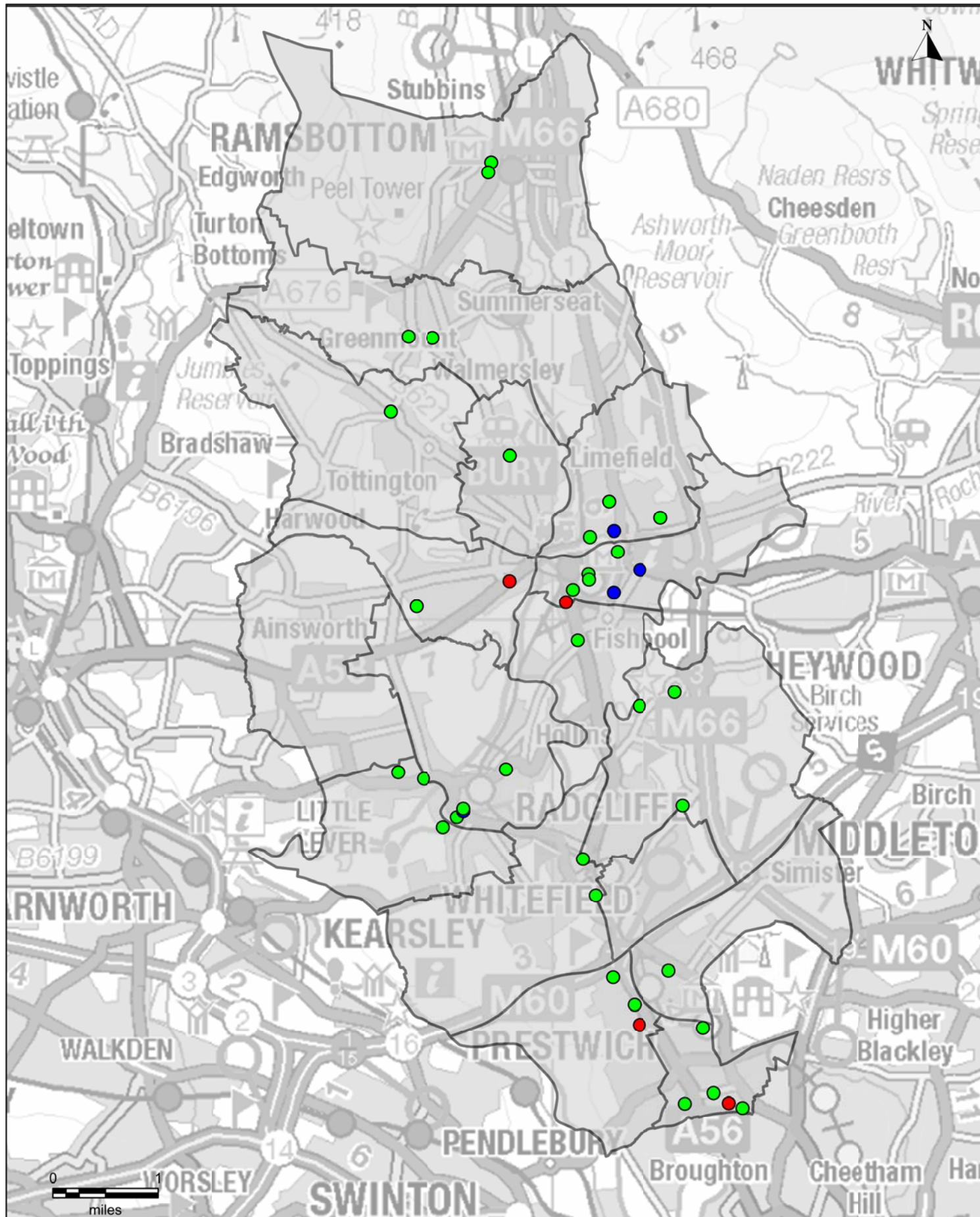


North West
Commissioning Support Unit

Bury pharmacy contractors and Supervised Consumption provision

- Pharmacy Contractors not commissioned to provide Supervised Consumption
- Pharmacy Contractors commissioned to provide Supervised Consumption

(27) Wards
(15)



Bury Pharmacy Contractors by Contract Type

Contains Ordnance Survey data © Crown copyright and database right 2014
Contains National Statistics data © Crown copyright and database right 2014



North West
Commissioning Support Unit

Pharmacies by Contract Type

100 hours
Contract

(5)

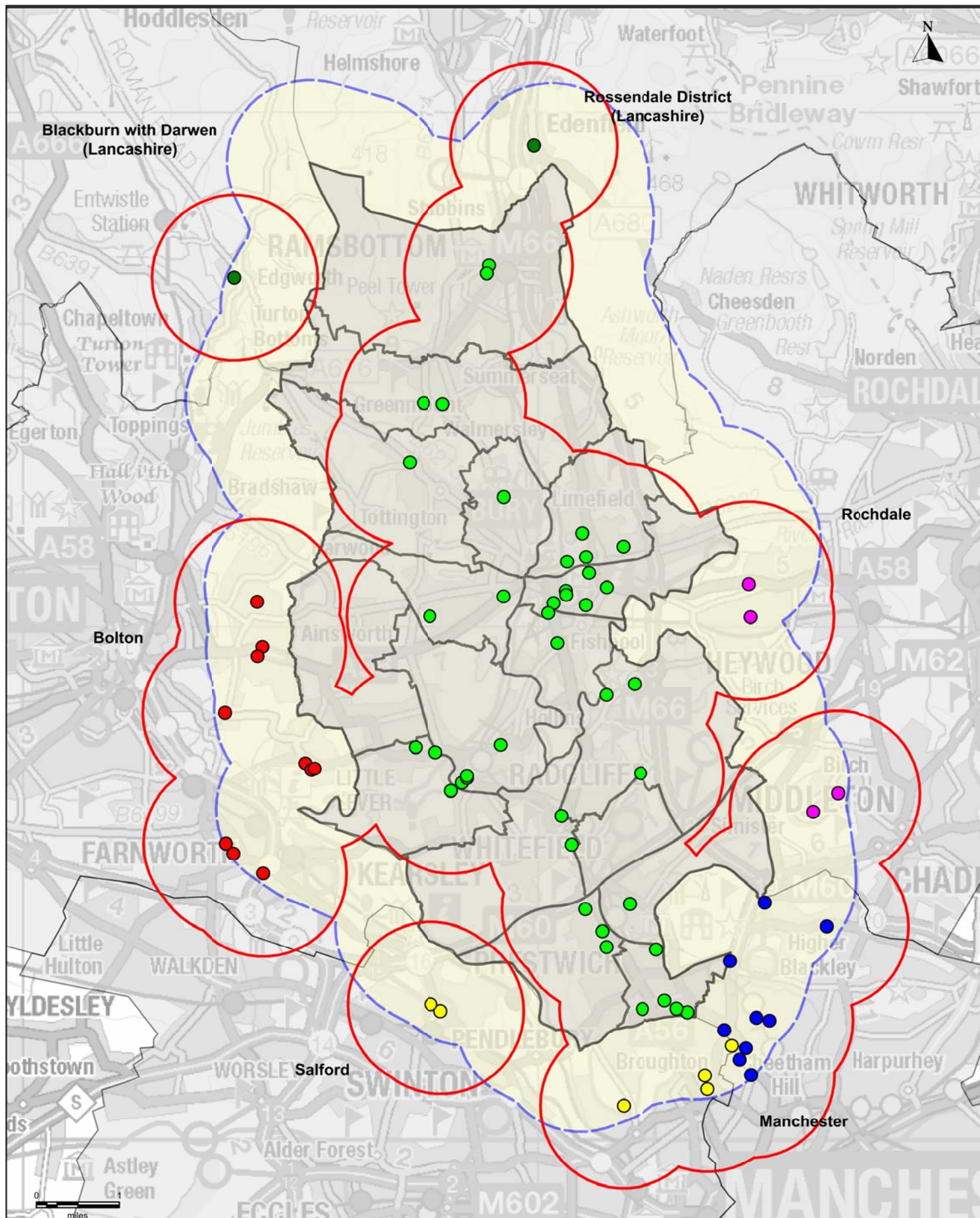
Distance
Selling/
Internet
Contract

(4)

Standard
Contract

(33)

Wards



Pharmacy Contractors in Bury Council Boundary and within 1 mile

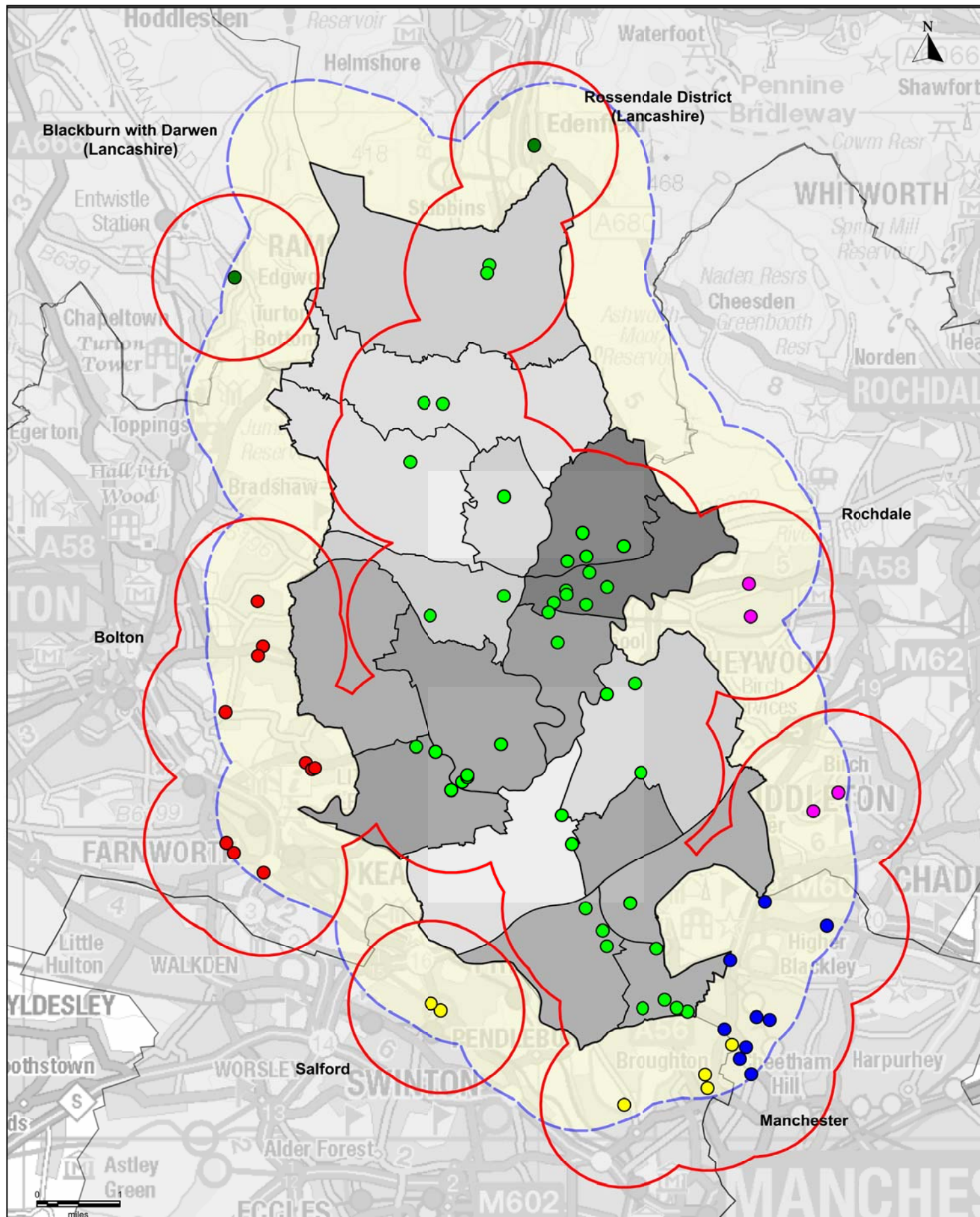


North West
Commissioning Support Unit

Pharmacy Contractors within 1 mile of Bury Council Boundary

● Bolton	(10)	● Rochdale	(4)
● Lancashire	(2)	● Salford	(6)
● Manchester	(1)	● Bury	(42)

- Wards
- 1 mile from Council Boundary
- 1 mile Zone Round Pharmacies



Pharmacy Contractors in Bury Council Boundary and within 1 mile plotted against Number of Households with no cars

Contains Ordnance Survey data © Crown copyright and database right 2014
Contains National Statistics data © Crown copyright and database right 2014



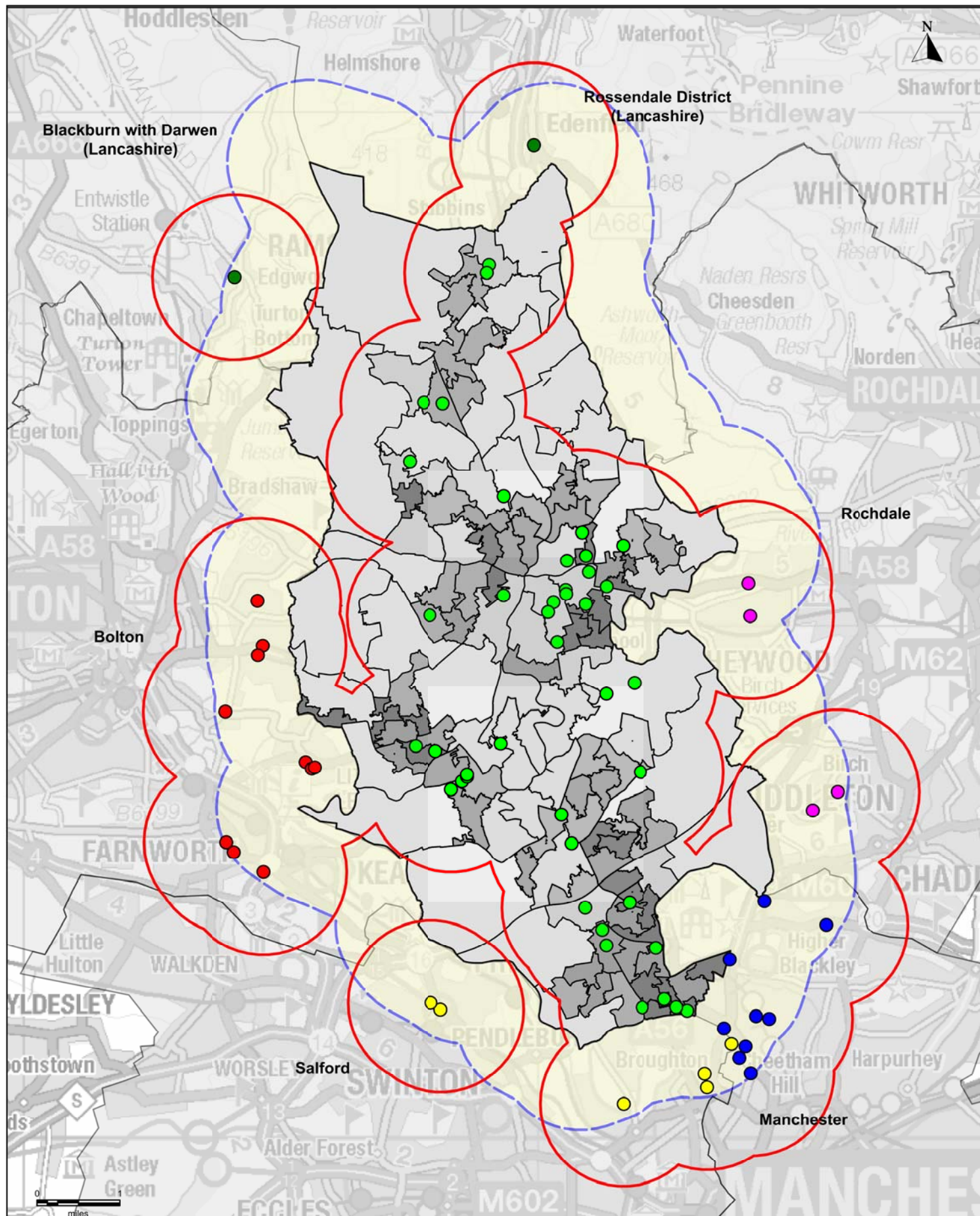
North West
Commissioning Support Unit

Pharmacy Contractors within 1 mile of Bury Council Boundary

- Red dot: Bolton (10)
- Green dot: Lancashire (2)
- Blue dot: Manchester (9)
- Purple dot: Rochdale (4)
- Yellow dot: Salford (6)
- Light green dot: Bury (42)

Number of Households with No Car (Data 2011)

- Dark grey: 1,590 to 1,880
- Medium grey: 1,310 to 1,590
- Light grey: 1,030 to 1,310
- White: 750 to 1,030
- White: 470 to 750
- Black outline: Wards
- Blue dashed line: 1 mile from Council Boundary
- Red solid line: 1 mile Zone Round Pharmacies



Pharmacy Contractors in Bury Council Boundary and within 1 mile plotted against Population per Hectare by LSOA

Contains Ordnance Survey data © Crown copyright and database right 2014
Contains National Statistics data © Crown copyright and database right 2014



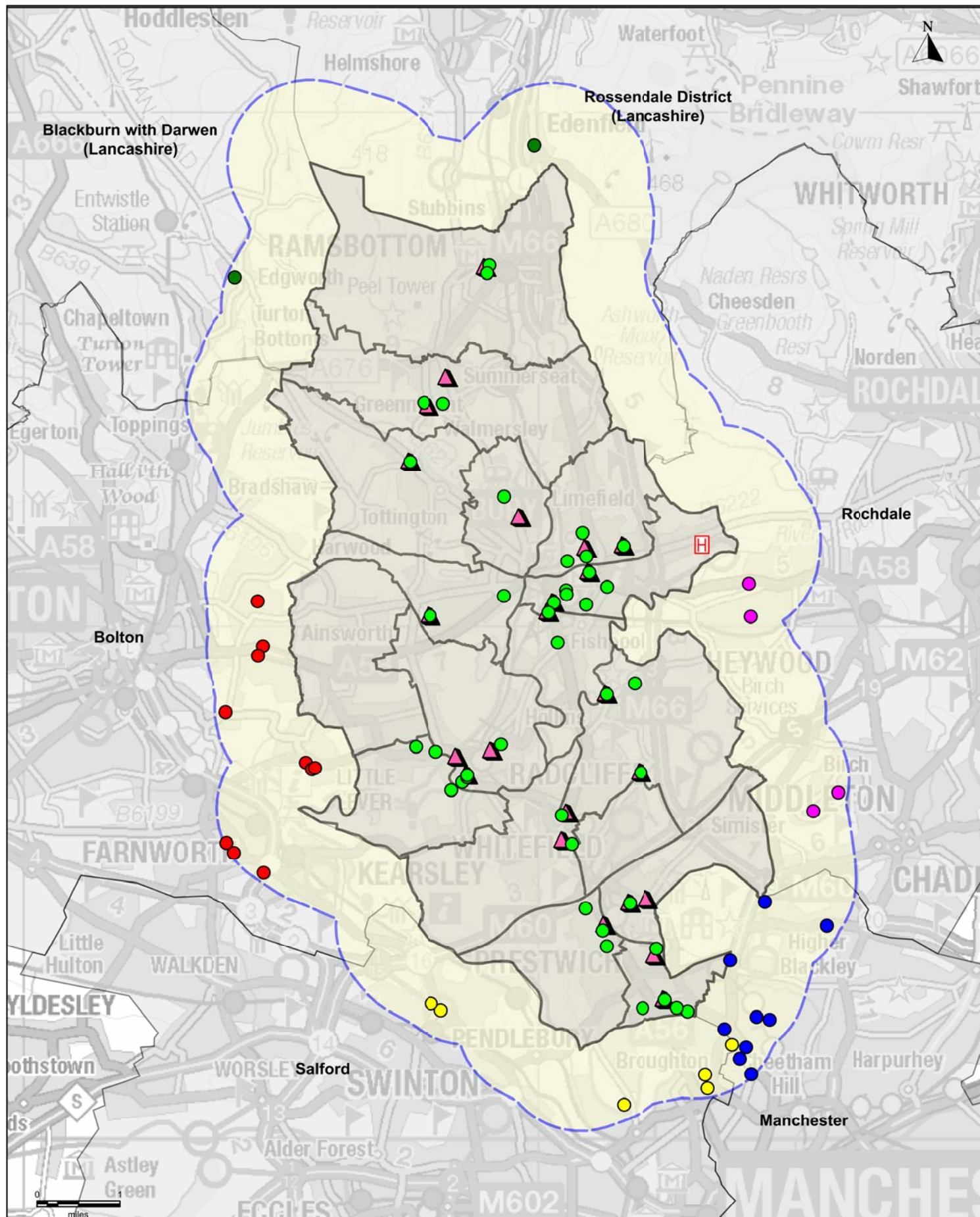
North West
Commissioning Support Unit

Pharmacy Contractors within 1 mile
of Bury Council Boundary

- | | | | |
|--------------|------|------------|------|
| ● Bolton | (10) | ● Rochdale | (4) |
| ● Lancashire | (2) | ● Salford | (6) |
| ● Manchester | (9) | ● Bury | (42) |

Population per Hectare by LSOA (Data 2011)

- | | |
|--------------------------------|--------------------------------|
| ■ 56 to 125 | ■ 17 to 29 |
| ■ 41 to 56 | ■ 1 to 17 |
| ■ 29 to 41 | |
| — 1 mile from Council Boundary | — Wards |
| | — 1 mile Zone Round Pharmacies |



Pharmacy Contractors in Bury and within 1 mile of Council Boundary plus Bury GP practices and hospital

Contains Ordnance Survey data © Crown copyright and database right 2014
Contains National Statistics data © Crown copyright and database right 2014



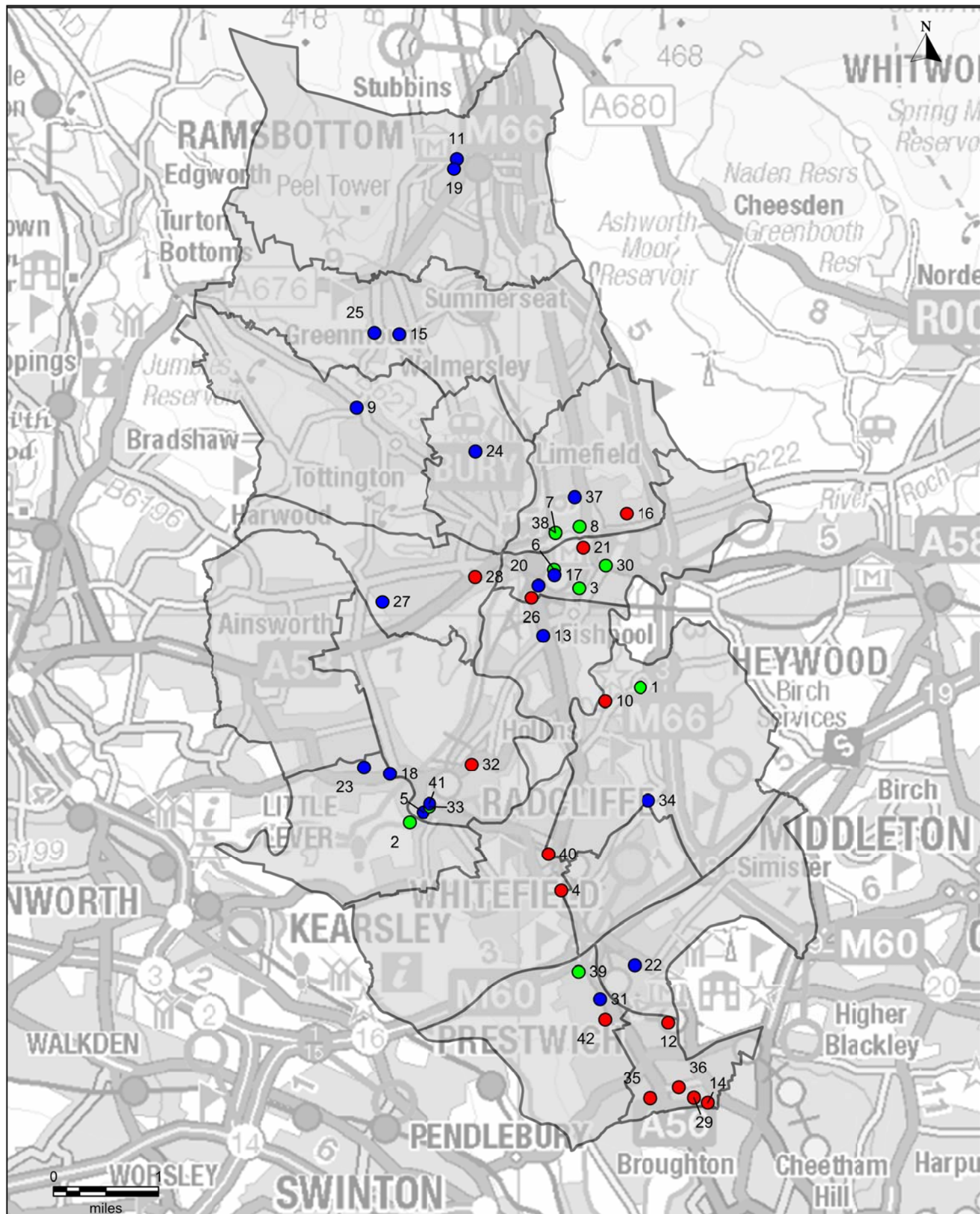
North West
Commissioning Support Unit

Pharmacy Contractors within 1 mile
of Bury Council Boundary

● Bolton	(10)	● Rochdale	(4)
● Lancashire	(2)	● Salford	(6)
● Manchester	(9)	● Bury	(42)

Wards
1 mile from
Council Boundary
1 mile Zone Round
Pharmacies

GP Practice(s)
Fairfield General
Hospital



Bury Pharmacy Contractors and Accessibility

Contains Ordnance Survey data © Crown copyright and database right 2014
Contains National Statistics data © Crown copyright and database right 2014

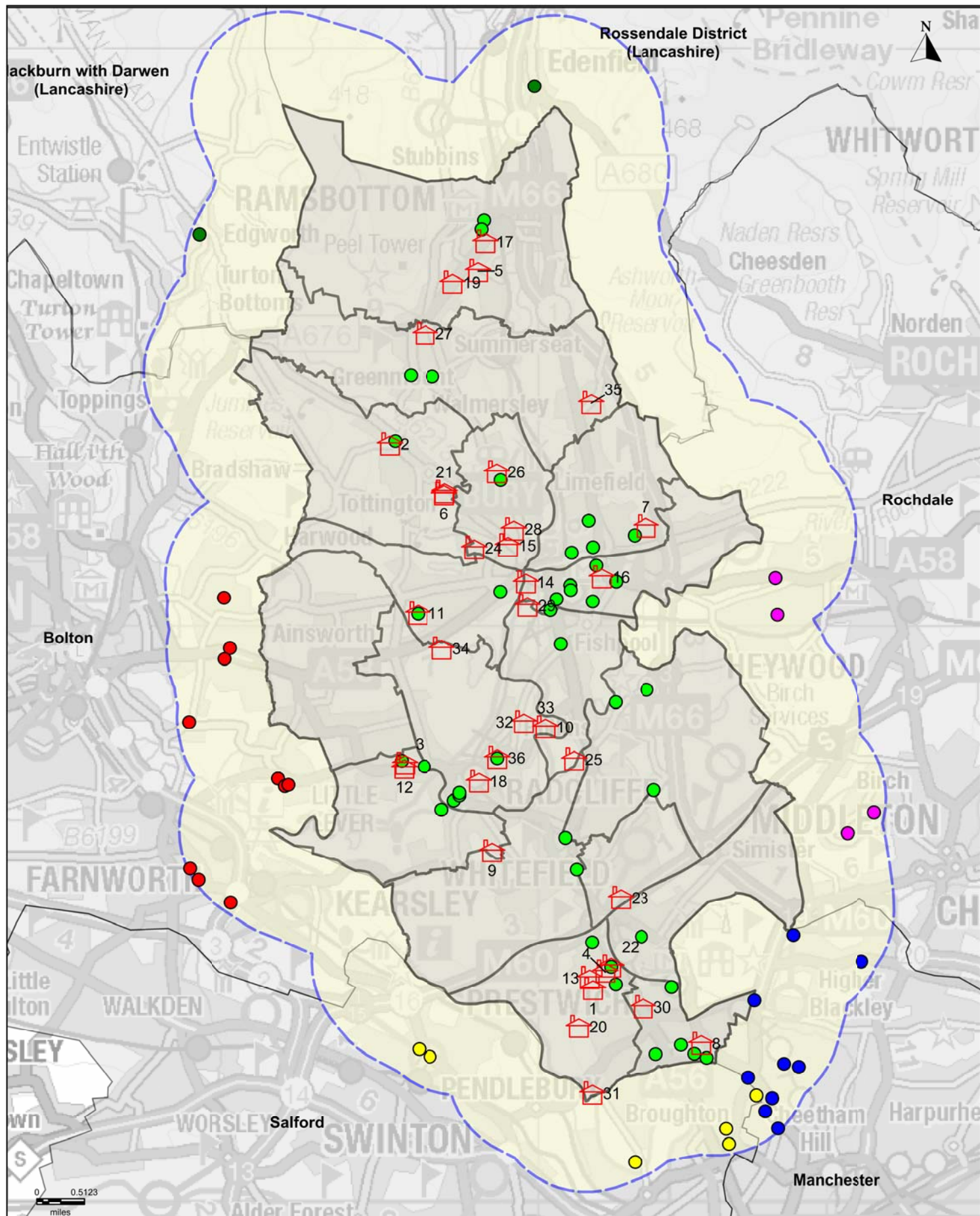


North West
Commissioning Support Unit

Bury Pharmacies and Accessibility

- Open Mon - Fri (14)
- Open Weekdays & Saturday (18)
- Open Late Weekdays and Open (10)
- Open Sat & Sun

Wards



Bury Pharmacy Contractors with Planning Application sites (labelled)

Contains Ordnance Survey data © Crown copyright and database right 2014
Contains National Statistics data © Crown copyright and database right 2014



North West
Commissioning Support Unit

Pharmacy Contractors within 1 mile
of Bury Council Boundary

● Bolton	(10)	● Rochdale	(4)
● Lancashire	(2)	● Salford	(6)
● Manchester	(9)	● Bury	(42)

Wards

1 mile from
Council Boundary



Planning application sites